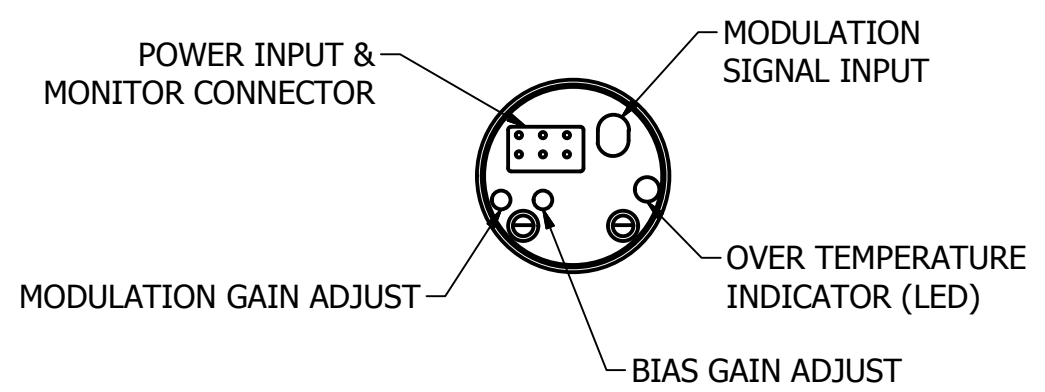
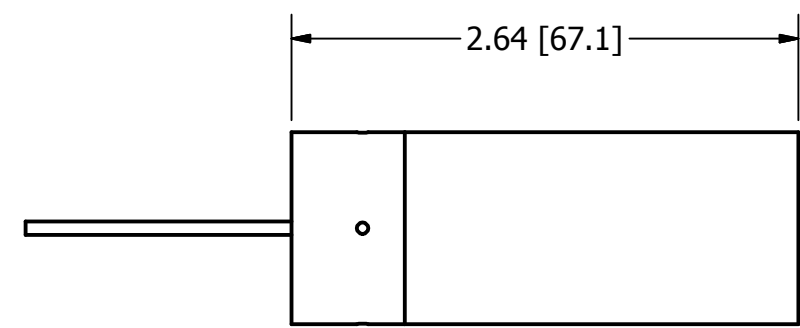
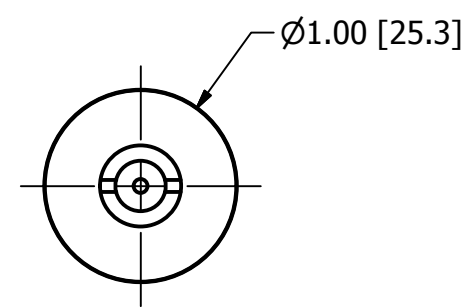


4 3 2 1




BEAM EXIT



- NOTES:
- 1 INTERPRET DRAWING PER 40M114
 - 2 THE CONTRACTOR, POWER TECHNOLOGY INC. HEREBY CERTIFIES THAT, TO THE BEST OF ITS KNOWLEDGE AND BELIEF, THE TECHNICAL DATA DELIVERED HERewith UNDER THE SUBJECT CONTRACT IS COMPLETE, ACCURATE AND COMPLIES WITH ALL REQUIREMENTS OF THE CONTRACT.
 - 3 WORKMANSHIP SHALL BE IN ACCORDANCE WITH MIL- HDBK - 454. GUIDELINE 9.
 - 4 Anodize Per mil-A-8625 Type II Class II

PROPRIETARY INFORMATION NOTICE: Despite any other copyright notices, this document and information disclosed herein contains confidential, proprietary designs owned by POWER TECHNOLOGY. Information contained herein shall NOT be reproduced, used or disclosed without the written authorization of POWER TECHNOLOGY.

MATERIAL ALUMINUM		 <p>Power Technology, Inc. Address correspondence to: P.O. Box 191117 Little Rock, Ar 72219-1117 (501) 407-0712 Plant Location: 16302 Alexander Road Alexander, Ar. 72002 (501) 407-0036 Fax</p>					
FINISH BLACK ANODIZE							
DIMENSIONAL TOLERANCES AND SYMBOLS IN ACCORDANCE WITH ANSI Y14.5M-1982		DRAWN SM		DATE 3/13/26		TITLE PMA / PMH LASER MODULES	
.xx±.01 ∠±2°		CHECKED		PROJ.ENGR		NO.	
.xxx±.005 FRACTIONS+1/64		ENGR		APPROVED		SC	
SCRATCH & DIG >63		NO.		RV		SZ	
		0-0331-0C00		A		B	
		Sheet of		1		1	

4 3 2 1