



The CPD Series laser modules are designed exclusively to host green laser diodes that do not have their own internal photodiode. The CPD overcomes this challenge by integrating an internal photodiode after a collimating lens. This configuration allows for Automatic Power Control (APC) mode of operation. APC Control is not available on a majority of competing DPSS lasers at these wavelengths. The stability of this configuration can not be matched by inexpensive DPSS lasers.

They can deliver from 5mW of output power with a wavelength of 510nm.

Additional design features include great wavelength stability, excellent optical power stability, and CW output. Output power is adjustable by turning a potentiometer on rear of the unit.

For Machine Vision applications, PTI suggest our PNF™ Series laser module at 510nm. It offers even intensity line generators and other features specific to the machine

vision industry.

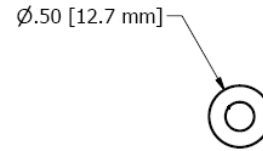
In addition, Power Technology, Inc. provides custom design and manufacturing services that include high and low volume production, custom engineering, and customized connectors. Find out more. Call Power Technology today.

Applications

- Aiming, Pointing & Alignment
- Dimensional Scanning
- Road & Rail Inspection
- Fluorescence
- Illumination

Specifications

Wavelength (nm)	510nm
Color	Green
Output Power (mW)	4.9mW
Output Power Stability @ 25°C	<±0.2%
Output Power Stability, over temp range	<±0.5%
Noise rms (10Hz - 5MHz)	<±1%
Beam Properties	Collimated
Beam Size (collimated)	0.81 x 2.36
Divergence (collimated)	<1mRad
Spatial Mode	TEM ₀₀
User Focusable	No
Output Parameter	CW
Vibration (non-operating)	5 G (20 - 200Hz)
Shock	TBD
Operating Voltage (VDC)	SVDC
Maximum Operating Current (mA)	350mA
Temperature Range (°C)	0-30°C
Beam Pointing Stability	<10µRad/°C

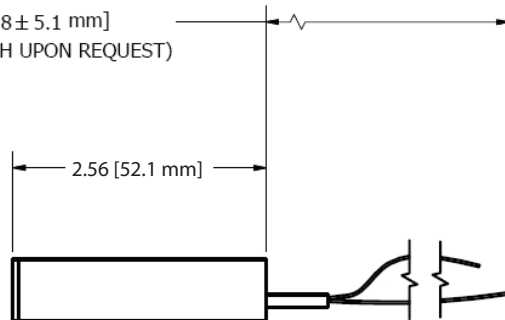


CALIBRATION POT (FACTORY SEALED)



CUSTOMER POWER CONTROL

12.00 ± .20 [304.8 ± 5.1 mm]
(CUSTOM LENGTH UPON REQUEST)



* Non-condensing 90% R.H.

