

PRELIMINARY DATASHEET

HRM

High-temperature Laser



DESCRIPTION

The Power Technology HRM laser delivers a rugged high-temperature offering to its Extreme Environment Laser Portfolio. With its reduced Size, Weight, and Power consumption compared to alternatives, its wider operating temperature reduces field failures, increases lifetime, and lowers costs. The HRM modules offer multiple wavelength choices across the ultraviolet, visible, and infrared spectrum. The platform features two performance levels, one offering functionality in temperatures of up to 85 degrees Celsius and another with operation in up to 175 degrees Celsius for more extreme conditions. The laser modules are available in a broad range of output powers from 2 mW to 100 mW. In addition, the HRM is IP67-rated for water and dust resistance and features a sealed Mini USB connector.

APPLICATIONS

- Military
- Aerospace
- Automotive
- Heavy Industrial

FEATURES & BENEFIT

- Up to 175°C Operating Temperature
- Reduced Size, Weight, and Power Consumption
- Mini USB Connector
- IP67 Rating

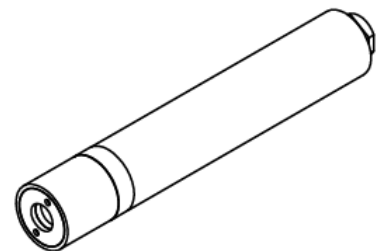
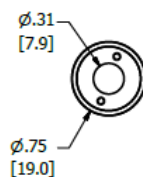
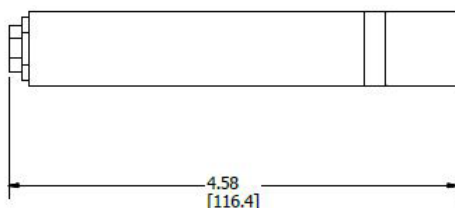
SPECIFICATIONS

Extreme Temp Series	660-10	660-50	1300-5	1300-2	1300-2
Output Power (mW)	10	50	5	2	2
Wavelength at 25°C (nm)	660	660	1300	1300	1300
Op. Temp. (°C)	15-85	85	15-110	15-150	15-175
Beam Diameter (mm)	1.60x4.39	1.19x2.66	TBD	TBD	TBD
Beam Divergence (mrad)	< 1.0	< 1.0	< 1.0	< 1.0	< 1.0
Output Power Mode*	CW	CW	CW	CW	CW
Op. Voltage (VDC)	5.0	5.0	5.0	5.0	5.0
Op. Current (mA)	40	160	110	130	130
Module Diameter (mm)	19	19	19	19	19
Module Length (mm)	116	116	116	116	116

High Temp Series	405-120	450-80	520-20	520-80	660-5	660-50	780-80	905-100	1300-5
Output Power (mW)	120	80	20	80	5	10	50	100	5
Wavelength at 25°C (nm)	405	450	520	520	660	660	780	905	1300
Op. Temp. (°C)	15-80	15-80	15-60	15-60	15-80	15-80	15-75	15-65	15-80
Beam Diameter (mm)	1.14x2.53	1.08x2.76	0.92x1.86	0.92x1.86	1.60x4.39	0.93x1.99	1.34x2.28	1.21x3.51	TBD
Beam Divergence (mrad)	< 1.0	< 1.0	< 1.0	< 1.0	< 1.0	< 1.0	< 1.0	< 1.0	< 1.0
Output Power Mode*	CW	CW	CW	CW	CW	CW	CW	CW	CW
Op. Voltage (VDC)	8.0	8.0	8.0	8.0	5.0	5.0	5.0	5.0	5.0
Op. Current (mA)	130	90	90	210	130	130	130	160	110
Module Diameter (mm)	19	19	19	19	19	19	19	19	19
Module Length (mm)	116	116	116	116	116	116	116	116	116

*Future models will include modulation

MECHANICAL DRAWINGS



SAFETY WARNINGS



COMPLIANT & REGISTERED

