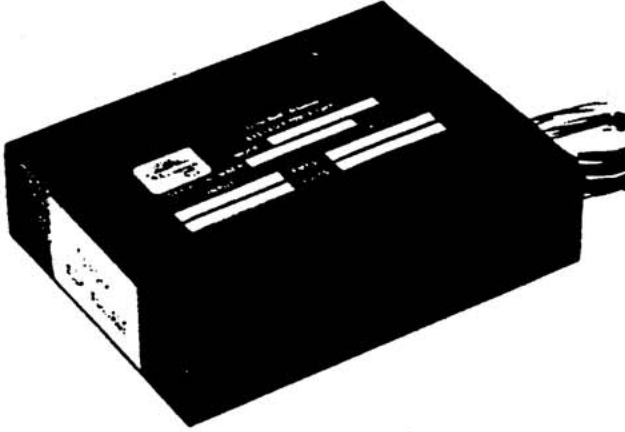


115/230V AC HeNe Laser Power Supply



The Model L92 is a current regulated, switching mode, dual input voltage power supply for operating helium neon lasers from AC input voltages of 100-130V or 200-260V. The Model L92 is fully potted in molded case for protection from dust, moisture, and circuit access. No heat sinking is required. Options include a 3-5 second CDRH time delay, enable circuit, and a variety of connectors to match all currently available laser heads.

This model, the UL92, is optionally available as an Underwriters Laboratories (UL) recognized unit.

SPECIFICATIONS

	<u>L92I</u>	<u>L92D</u>	<u>L92</u>	<u>L92E</u>
Input Voltage	100-230VAC or 200-260VAC			
Input Frequency	50-400Hz			
Starting Voltage	8KV	8KV	10KV	10KV
Output Power	1.8-9W	3.5-11W	6-18W	16-25W
Output Voltage	.9-1.5KV	1.25-2KV	1.4-3KV	2.5-3.5KV
Output Current	2-5mA	2.8-5.5mA	4-7mA	5.5-7.5mA
Current Regulation	+/- .05mA for +/- 10% line change +/- .05mA for +/- 10% line change			
Temperature	-20 degrees C to +60 degrees C operating -40 degrees C to +85 degrees C storage			
Isolation from AC Line	1500V isolation from AC line to safety ground and HV return			
Fusing	For safety a 1/2 to 1 amp fuse is recommended			
Size	1.20 x 3.30 x 4.25" 30 x 84 x 108mm			
Weight	.96 lbs. 436 gms.			
Mounting	(3) .156 dia. holes see drawing for hole placements			

WIRING INSTRUCTIONS

- +HV The large red silicon rubber insulated wire is the high voltage output lead and is connected to the ballast resistor. The lead between the ballast resistor and tube anode should be as short as practical. See tube manufacturer's specification for maximum allowable length.

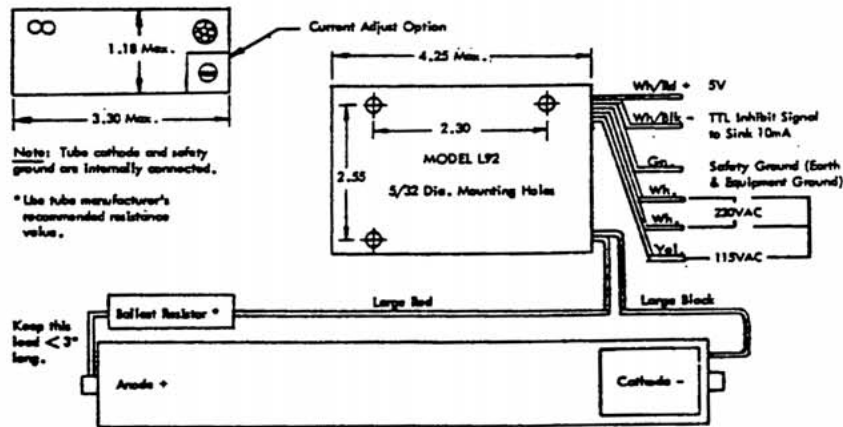
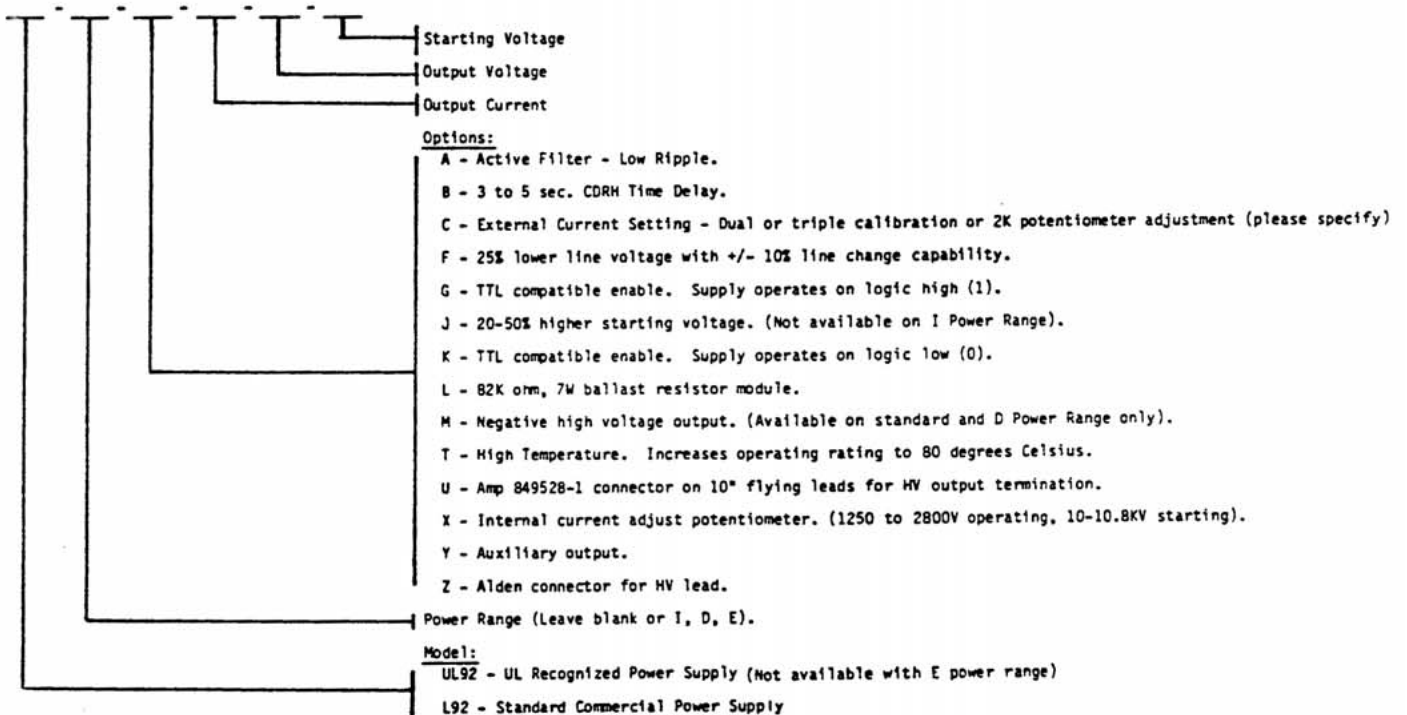
- HV The large black silicon rubber insulated wire is the high voltage return and is connected to the laser cathode. Note: this lead is connected internally to the green safety ground.

- 115VAC Connect both white wires to one side of the AC line. Connect the yellow wire to the other side of the AC line.

- 230VAC Connect one white wire to each side of the AC line. Insulate the yellow wire with shrink tubing.

- Ground The green wire is the safety ground lead and is connected to earth or equipment ground. Note: the green wire and the high voltage return wire are connected internally.

HOW TO ORDER



POWER TECHNOLOGY, INC. reserves the right to make such changes at any time as deemed practical and/or necessary to improve design and operation of the product. Information provided is believed at this time to be accurate and reliable. No responsibility is assumed for its use, nor for any infringement on the rights of others.



Mailing: P. O. Box 191117, Little Rock, AR 72219-1117 • Shipping: 16302 Alexander Road, Alexander, AR 72002
Tel: 501.407.0712 • Fax: 501.407.0036 • Email: sales@powertech.com • Web: www.powertech.com