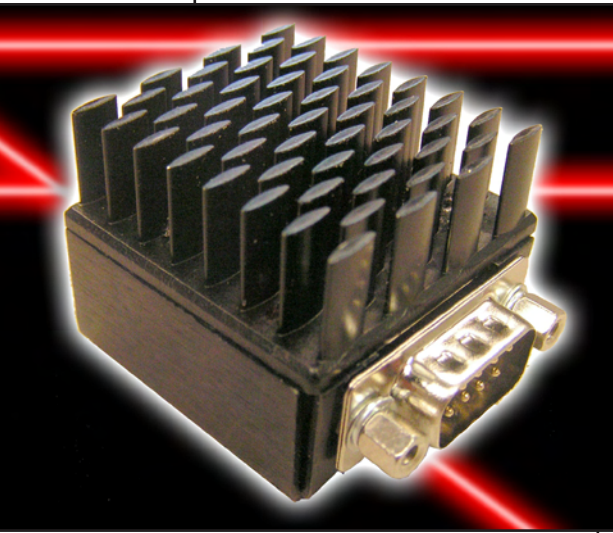


Components

Sub-Assemblies

Laser Diode Drivers

**NEW
PRODUCT!**



Features

- Choice of output voltage
- Choice of output current
- Integrated enable feature
- Current monitoring pins
- Soft start for maximum protection
- Remote analog output control
- Automatic input overdrive protection
- Diode protection upon shut down
- One year warranty

Power Technology's newest line of laser diode drivers are precision current sources designed for the demanding requirements of high-power laser diode emitters, bars, and arrays. The compact form fits neatly into even the most space-limited applications.

The drivers may drive single- or multi-facet laser diodes up to a compliance voltage of 30V. Multiple configurations are available.

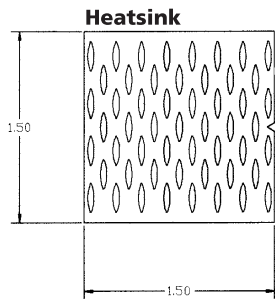
The LDP Series comes standard with several features that allow for external control via your control circuitry.

The unit also features current monitoring terminals, diode protection upon shutdown, a soft start circuit, reverse polarity protection, and customer adjustable bias and current limit setting through a series of binary dip switches.

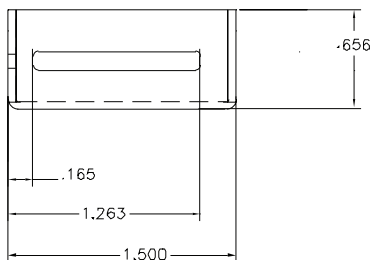
This unit incorporates several new features like integrated dip switches that will not drift like potentiometers and a highly efficient heat sink.

Call one of our sales engineers today to discover how our new LDP series can benefit your application.

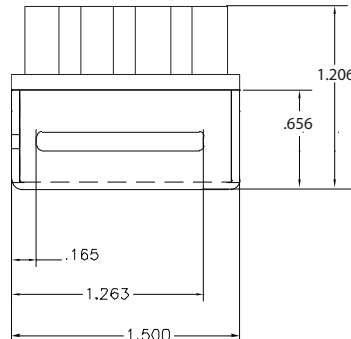
SPECIFICATIONS	LDP359-XX-250	LDP359-XX-1000	LDP359-XX-2500
Operating Voltage (VDC)	4.5 - 9.0	4.5 - 9.0	4.5 - 9.0
Max. Operating Current (mA)	250	1000	2500
Current Set Resolution (mA)	1	4	10
Photodiode Feedback (mA)	.003 - 3	.003 - 3	.003 - 3
Operating Mode	APC or CC	APC or CC	APC or CC
Output	CW	CW	CW
Diode Compatibility	P, N, M & 4-pin Type	P, N, M & 4-pin Type	P, N, M & 4-pin Type



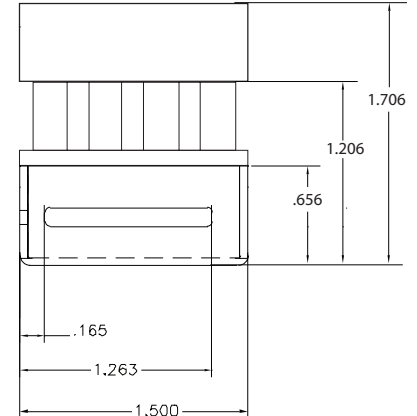
LDP359-XX-250



LDP359-XX-1000



LDP359-XX-2500



DS_LDD11807