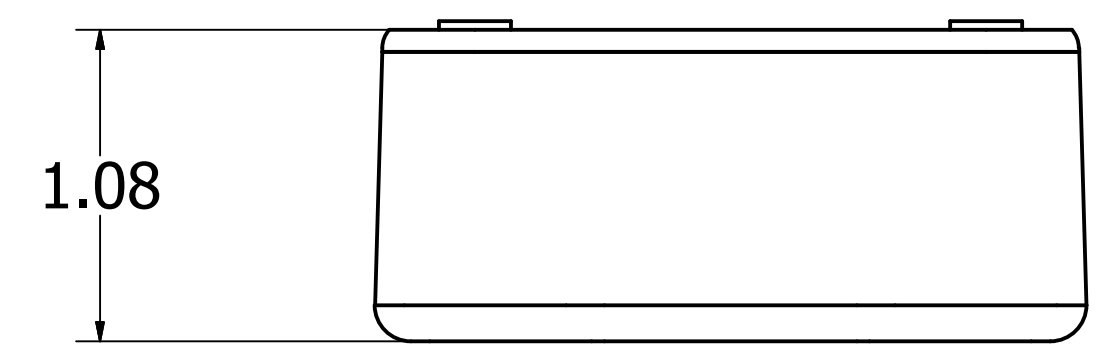
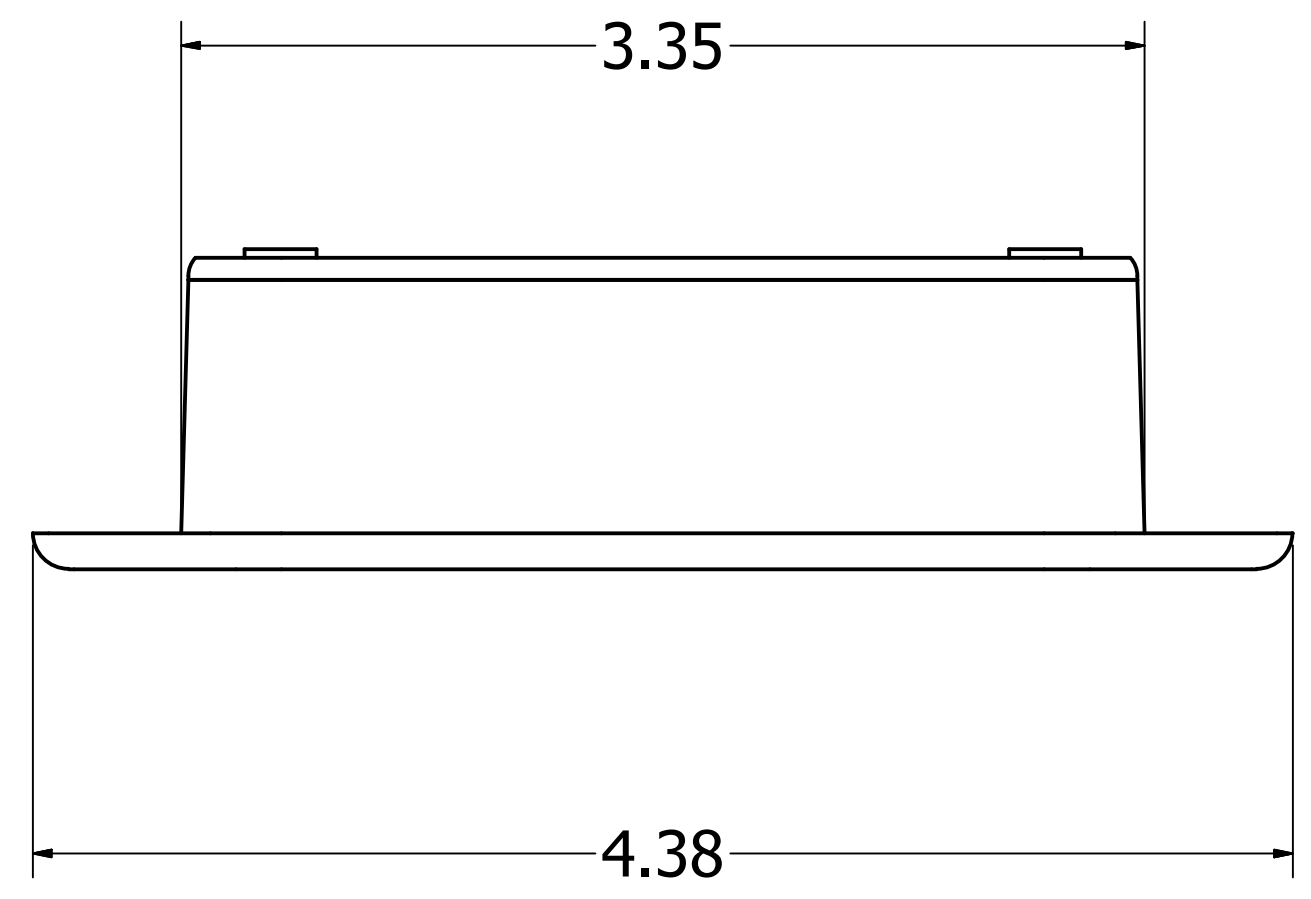
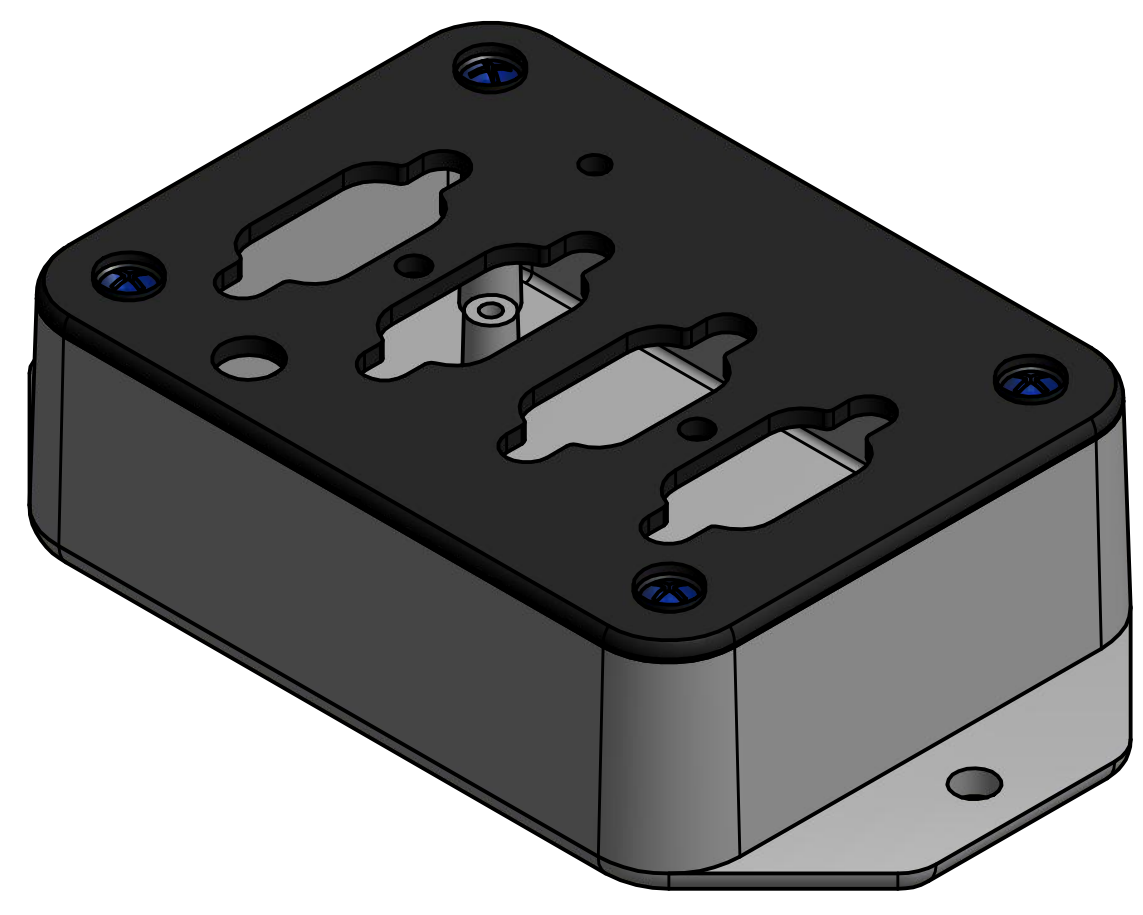
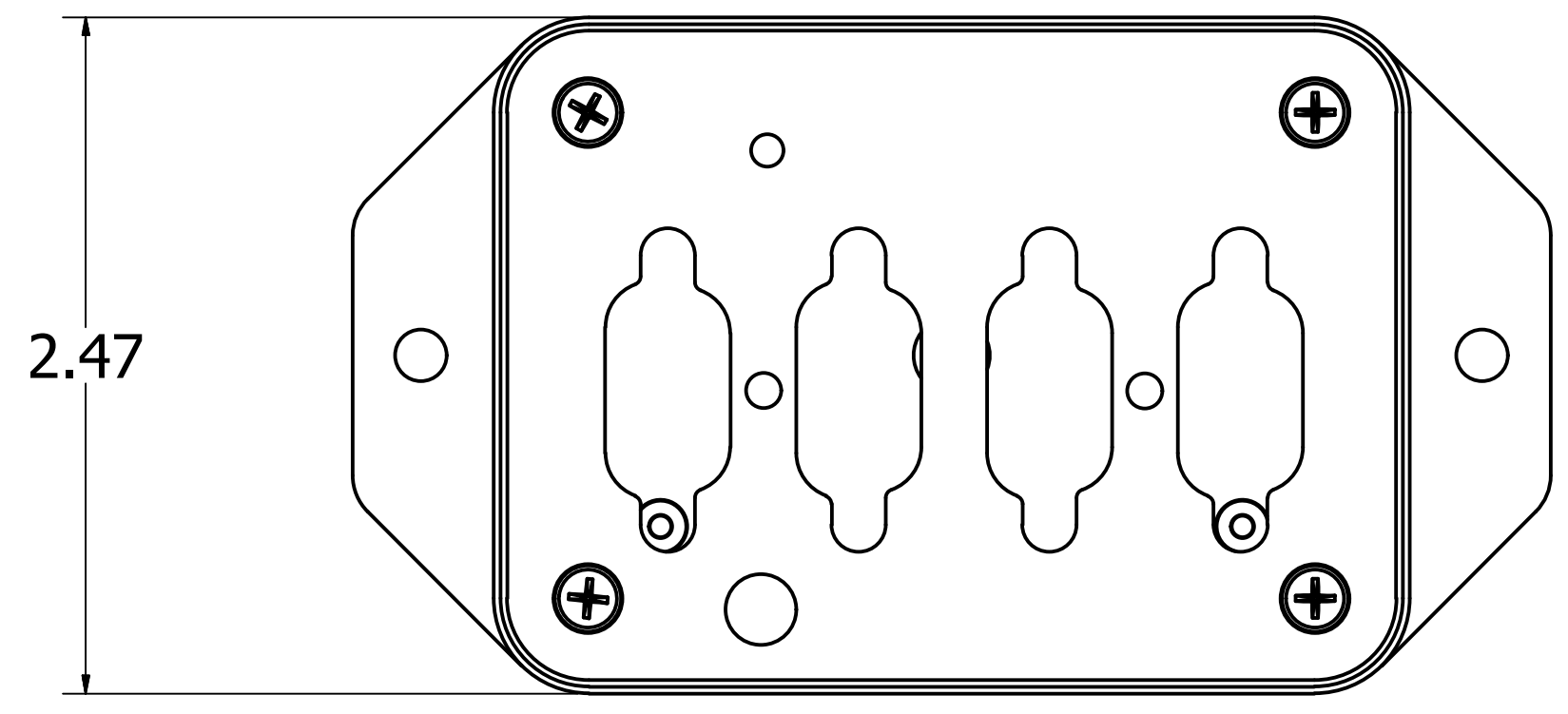


4 3 2 1

D
C
B
A

D
C
B
A



NOTES:
 1 INTERPRET DRAWING PER 40M114
 2 THE CONTRACTOR, POWER TECHNOLOGY INC. HEREBY CERTIFIES THAT, TO THE BEST OF ITS KNOWLEDGE AND BELIEF, THE TECHNICAL DATA DELIVERED HERewith UNDER THE SUBJECT CONTRACT IS COMPLETE, ACCURATE AND COMPLIES WITH ALL REQUIREMENTS OF THE CONTRACT.
 3 WORKMANSHIP SHALL BE IN ACCORDANCE WITH MIL- HDBK - 454, GUIDELINE 9.
 4 Anodize Per mil-A-8625 Type II Class II unless specified otherwise.

PROPRIETARY INFORMATION NOTICE: Despite any other copyright notices, this document and information disclosed herein contains confidential, proprietary designs owned by POWER TECHNOLOGY. Information contained herein shall NOT be reproduced, used or disclosed without the written authorization of POWER TECHNOLOGY.

MATERIAL			
FINISH			
DIMENSIONAL TOLERANCES AND SYMBOLS IN ACCORDANCE WITH ANSI Y14.5M-1982. DIMENSIONS IN INCHES.		DRAWN	DATE
.xx±.01 $\leq \pm 2^\circ$		CHECKED	
.xxx±.005 FRACTIONS+1/64		PROJ. ENGR	
SCRATCH & DIG >63		PDU DB Connector style	
ENGR	APPROVED		
		RV	SZ
			Sheet of
		-	B 1 1

4 3 2 1