

QSI LASER DIODE SPECIFICATIONS FOR APPROVAL

Customer :.

Model : QL63D5S-A/B/C-B

Signature of Approval

Approved by _____

Checked by _____

Issued by _____

Approval by Customer



QSI Co., Ltd.

**315-9, Cheonheung-ri, Sungger-eup,
Cheonan-city, Chungnam, Korea 330-836**

WWW.QSILaser.com

QL63D5S-A/B/C-B

InGaAlP Laser Diode

Quantum Semiconductor International Co., Ltd.

Ver. 0 Aug. 2009

◆OVERVIEW

QL63D5S-A/B/C-B is a MOCVD grown 635nm band *InGaAlP* laser diode with quantum well structure.

It's an attractive light source, with a typical light output power of 5mW for optoelectronic devices such as Laser distance measuring apparatus.

◆APPLICATION

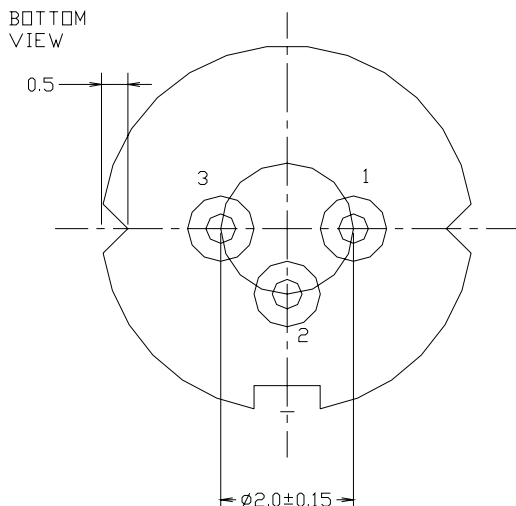
- Optical Leveler
- Laser distance measuring apparatus

◆FEATURES

- Visible Light Output : $\lambda_p = 635 \text{ nm}$
- Optical Power Output : 5mW CW
- Package Type : TO-18 (5.6mm ϕ)
- Built-in Photo Diode for Monitoring Laser Diode
- Low Capacitance

◆ELECTRICAL CONNECTION

Bottom View



Pin Configuration

A	LD cathode, PD anode (Fig. 1)
B	LD , PD anode (Fig. 2)
C	LD anode, PD cathode (Fig. 3)

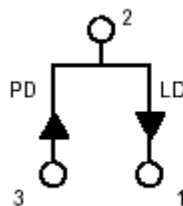


Fig. 1

QL63D5SA-B

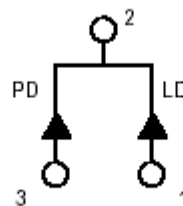


Fig. 2

QL63D5SB-B

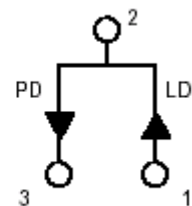


Fig. 3

QL63D5SC-B

◆ **ABSOLUTE MAXIMUM RATING at Tc=25°C**

Items	Symbols	Values	Unit
Optical Output Power	P	6	mW
Laser Diode Reverse Voltage	V	2	V
Photo Diode Reverse Voltage	V	30	V
Operating Temperature	Topr	-10 ~ +50	°C
Storage Temperature	Tstg	-40 ~ +85	°C

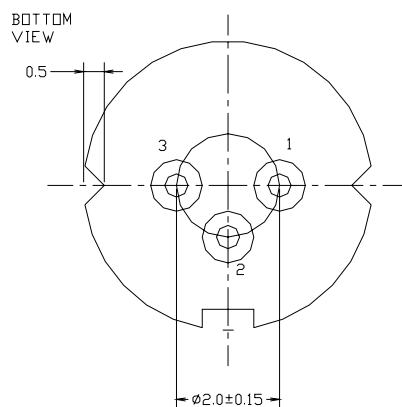
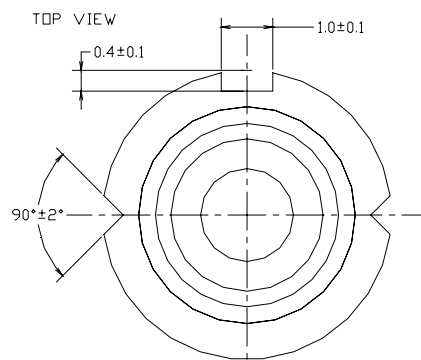
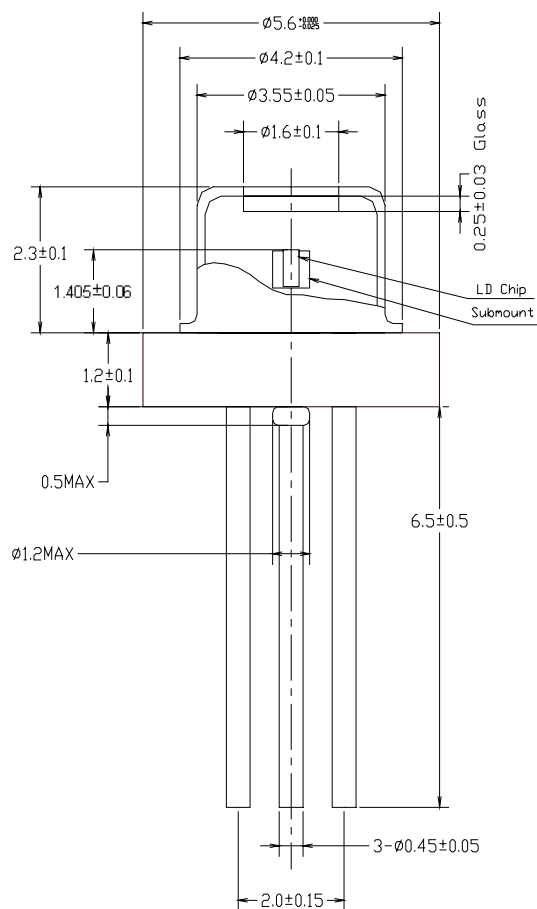
◆ **ELECTRICAL and OPTICAL CHARACTERISTICS at Tc=25°C**

Items	Symbols	Min.	Typ.	Max.	Unit	Condition
Optical Output Power	Po	-	5	-	mW	-
Threshold Current	Ith	-	18	25	mA	-
Operating Current	Iop	-	23	35	mA	Po=5mW
Operating Voltage	Vop	-	2.3	2.5	V	Po=5mW
Lasing Wavelength	λ_p	630	635	640	nm	Po=5mW
Beam Divergence	$\theta_{ }$	6	8	12	deg	Po=5mW
	θ_{\perp}	25	30	35	deg	Po=5mW
Beam Angle	$\Delta\theta_{ }$	-	-	±3.0	deg	Po=5mW
	$\Delta\theta_{\perp}$	-	-	±3.0	deg	Po=5mW
Monitor Current	Im	0.1	0.2	0.5	mA	Po=5mW
Optical Distance	$\Delta X, \Delta Y, \Delta Z$	-	-	±60	μm	-

NOTICE : QL63D5S-A/B/C-B to be operated on APC

The above product specifications are subject to change without notice.

◆ PACKAGE DIMENSION



◆PACKING

